


FISHWAY STATUS REPORT

Date: 12/26/2015
Inspection Period: 12/20/2015 thru 12/26/2015



**US Army Corps
of Engineers**
Portland District

JOHN DAY DAM

JD/WC Project-Fisheries
P.O. Box 823
Rufus, Oregon 97050
Phone: 541-506-7860

One inspection per day during the winter maintenance season, 1 December - 28 February.
Frequent monitoring of the PLC displays in SMF Fisheries Office as necessary.

John Day Dam	Inspections	Criteria	Total Number of Inspections:	7	Temperature:	43 F
	Out of Criteria	Limit	Secchi: 6.0 Ft.			
NORTH FISHWAY			OOS for winter maintenance since 12/1. ETR is the week of 12/28/15.			
Exit differential	0	≤ 0.5'				
Exit Control weirs	0	High setting	High setting is normal for JDN			
Count station differential	0	≤ 0.3'				
Weir crest depth (DS gauge)	0	1.0' ± 0.1'				
Entrance differential	0	1.0' - 2.0'	AVG	1.5		
SOUTH FISHWAY			3 AWS Turbines in regular service since 2/28/15			
Exit differential	0	≤ 0.5'				
Exit Control weirs	0	mid setting	return to mid setting 12-2-2015 due to forebay decreasing to < 265.0'			
Count station differential	0	≤ 0.3'				
Weir crest depth (US gauge)	0	1.0' ± 0.1'				
South entrance differential	0	1.0' - 2.0'	AVG	1.5		
Entrance weir SE1	0	depth (≥ 8')	AVG	9.4		
Collection channel velocity	0	1.5 - 4 fps	AVG	2.87		
N. Entrance PH(Bay 19)differential	0	1.0' - 2.0'	AVG	1.3		
Entrance weir NE1	0	depth (≥ 8')	AVG	8.1		
Entrance weir NE2	0	depth (≥ 8')	AVG	8.1		
JUVENILE PASSAGE			SMF successfully dewatered on 11/24. JBS in service until 12/16 as required by FPP.			
Forebay/bypass conduit differential	0	4.0' - 5.0'	AVG	4.6		
Submersible traveling screens	0	visual inspect	The end of season' STSs removal starting on 12/16.			
Turbine trashrack drawdown	0	<1.5', wkly	MU trashracks' raking as necessary per the differentials			
Vert barrier screen drawdown	0	<1.5', wkly				
Spill volume	0	Bay2 &1.6K	Spill season ended on 9/1.			
Spill pattern	0	per FPP				
Turbine Unit Priority	0	per FPP				
Turbine 1% Efficiency	0	per FPP				

SMOLT MONITORING FACILITY

Operation:

End of season dewatering completed on 11/24.

SMF will be OOS/ undergoing maintenance until mid March'15. JBS continues in service in its pre-SMF configuration (bypass at Crest Gate.)

Maintenance:

SMF has been winterized by JD Fisheries on 11/15. Only regular PMs will be performed this coming winter as all SMF hardware appears to be in good working order overall. The elevated chute's expansion joints appear to be in good condition, but need the surface epoxy coating.

Research:

None

Fallbacks: AVG: MAX: 0 MIN: 0

OTHER JOHN DAY ISSUES:

Birds :

see the Avian Numbers tab. We report all species and locations, but in reality only gulls in the tailrace BRZ are relevant at JD.

10 Navlock and Spillway lines are missing out of 125 total; JD attempting to contract their reinstallation before May 2016; need \$...

Lines 25 and 26 have been reinstalled by a contractor by 11/21; the remaining lines have been retensioned under the same contract.

Operations:

JD North fishway upper was successfully dewatered on 12/1.

JD North entrance was dewatered/ inspected on 12/7; the gratings there continue in mint condition/ are rock solid. ETR for JDN is the week of 12/28.

JD South Fishway in regular service with 3 AWS Turbines; it is meeting the optimal FPP criteria. Its annual dewatering is scheduled for 1/11/16.

MU Gatewell Drawdowns: Complete for 2015 passage season.

Maintenance:

JD North Fishway's winter maintenance underway since 12/2. AWS pumps' contractor continues testing and repairing all six units.

Calibration: All gauges/ sensors are within the criteria of 0.3' .

Research:

2015 Adult Fish Counting by Normandeau Associates was completed on 10/31. The counting will commence again on 1 April 2016.

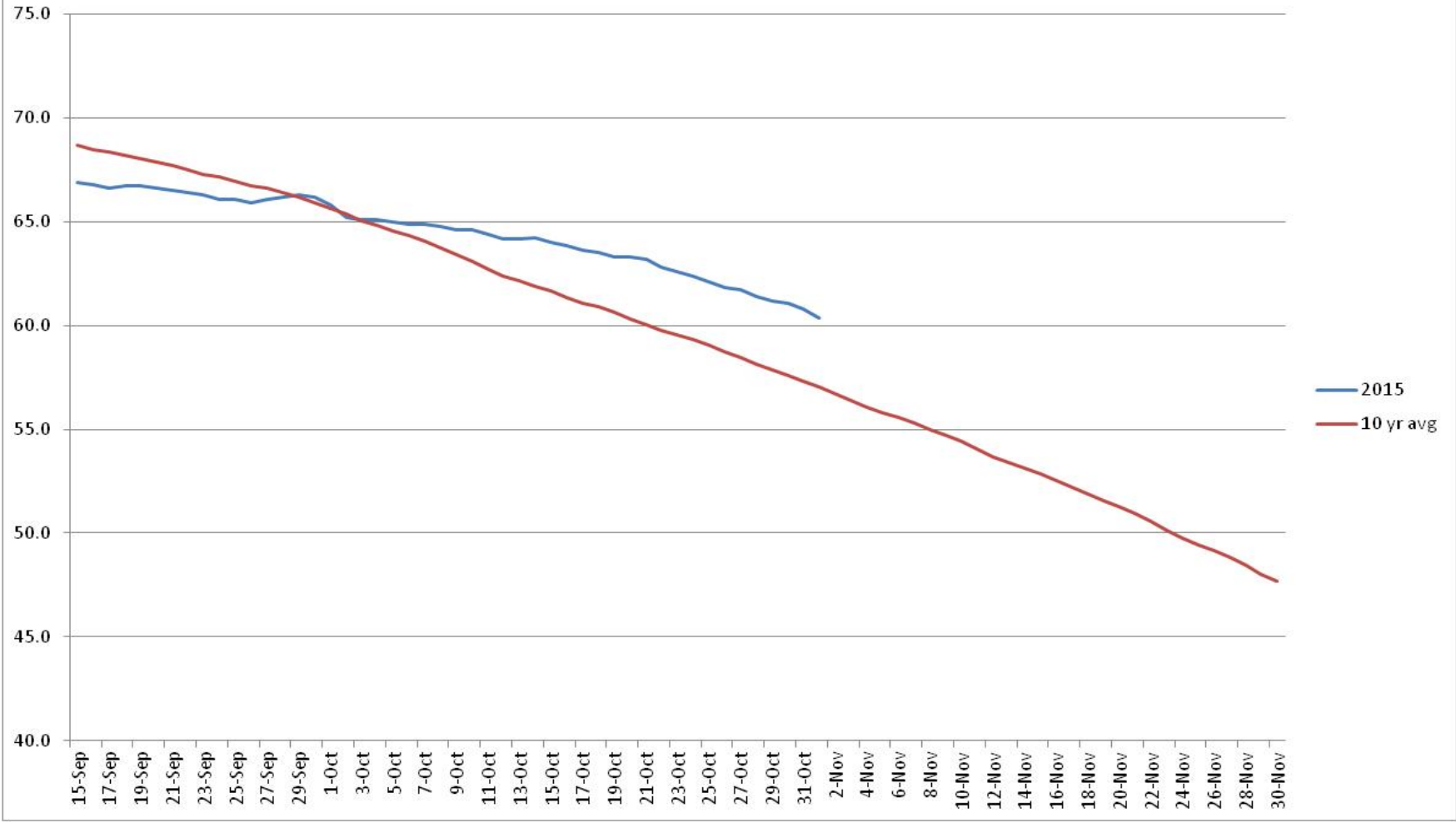
Proposal by PSMFC to install Adult PIT antennas at both JD Fishways is at the design/PDT level.

Kevin Moynahan
OPM John Day/Willow Creek Project

Date: December 26, 2015

MOYNAHAN, KEVIN, PATRICK, 1393959157
E-Signed by MOYNAHAN, KEVIN, PATRICK, 1393959157
VERIFY authenticity with Approval

John Day TW Temperature



JDA Collection Channel Velocity

Date 24-Dec-15

By: MDL

Bay(s)	Time	Sec.	Velocity (f/s)
0-2	1:29	89	2.02
2 - 4	2:31	151	2.90
4 - 6	3:35	215	2.81
6 - 8	4:37	277	2.90
8 - 10	5:45	345	2.65
10 - 12	6:48	408	2.86
12 - 14	7:52	472	2.81
14 - 16	8:56	536	2.81
16 - 18	9:40	580	4.09
			2.87

John Day Dam
Avian Zones



John Day Weekly Averages

	Temp:	Secchi:	Fallbacks
Sun	43	6.0	
Mon	43	6.0	
Tue	43	6.0	
Wed	43	6.0	
Thur	43	6.0	
Fri	42	6.0	
Sat	42	6.0	
AVG:	43	AVG: 6.0	AVG
			0
			MIN
			0

	NE1	NE2	S.Ent	SE1	N.Ent	JBS Diff	Bay19
Sun	8.2	8.3	1.5	9.0	oos	4.5	1.2
Sun					oos		
Mon	8.1	8.3	1.6	9.5	oos	4.6	1.3
Mon					oos		
Tues	8.1	8.0	1.6	8.9	1.6	4.5	1.2
Tues							
Wed	8.1	8.0	1.5	8.9	1.6	4.4	1.3
Wed							
Thur	8.2	8.0	1.4	9.6	1.5	4.6	1.3
Thur							
Fri	8.2	8.1	1.4	9.9	1.5	4.6	1.3
Fri							
Sat	8.1	8.1	1.3	10.1	1.5	4.6	1.3
Sat							
AVG:	8.1	8.1	1.5	9.4	1.5	4.5	1.3